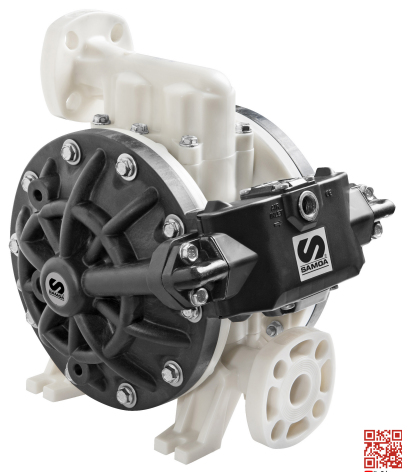


Ref.: 555164



1" PNEUMATIC DOUBLE DIAPHRAGM PUMP, DP200, DIRECTFLO SERIES, PP-HYTREL-PTFE (LUBE)

Very reliable diaphragm pumps for large volume transfer (200 l/min max.), dosing, and dispensing a variety of fluids. Polypropylene pumps have a polypropylene air motor. Typical applications for these pumps are transferring and dispensing of windshield washer, antifreeze solutions and AdBlue/DEF. They can be used as stand-alone pumps for transfer applications or as systems pumps in distribution systems that include hose reels. Pump inlet and outlet ports can be mounted in different positions for increased installation versatility. VIDEO Youtube: <https://youtu.be/xCaUzwP2eOM> VIDEO Youtube: https://youtu.be/b_O8J029PxY Instruction book: 855833.

Technical data

Documentation

More information

Target product type	Directflo Series Diaphragm Pumps
Pump size	1"
Pressure ratio	1:1
Maximum free flow delivery	200 l/min (53 gal/min)
Air pressure operating range	1,5-8 bar (20-120 psi)
Solids in suspension maximum size	6 mm (0,25 ")
Maximum dry suction head	5 m (16 ft)
Maximum wet suction head	8 m (26 ft)
Delivery per cycle	1 l (0,26 gal)
Fluid inlet	1" DIN / ANSI flanged
Fluid outlet	1" DIN / ANSI flanged
Air inlet	3/8" NPSM (F)
Air exhaust port	3/4" NPT (adapter required)
Sound level	80 dB
Certification	CE
Fluid path material	Polypropylene
Diaphragms type & material	Hytrel
Valve seats material	Polypropylene
Valve balls material	PTFE
Shaft material	Stainless steel
Seals material	FKM
Other wetted materials	Stainless steel
Wetted materials	Polypropylene, Hytrel, PTFE, Stainless steel, Viton
Air motor material	Aluminium

Weight

10,5 kg (23,15 lb)

Compatible fluids

Coolant, Windscreen washer, AdBlue/DEF

[Technical data](#)

[Documentation](#)

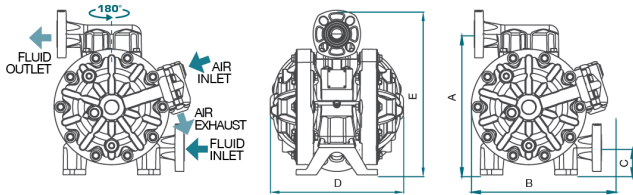
[More information](#)

[Login](#) or [register](#) to consult this content

[Technical data](#)

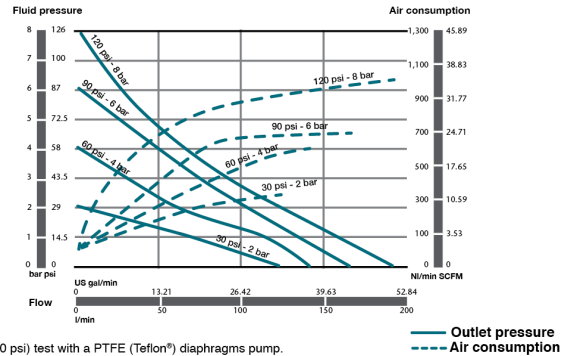
[Documentation](#)

[More information](#)



mm							
A	B	C	D	E	F	G	I
311	320	60	295	364	9	154	175
in							
A	B	C	D	E	F*	G	I
1 21/4	12 19/32	2 23/64	11 39/64	14 21/64	23/64	6 1/16	6 57/64

Tested at room temperature, with water and flooded pump with 800 mm (31.5 inches) height of water above the pump inlet.



(*) 2 bar (30 psi) test with a PTFE (Teflon®) diaphragms pump.