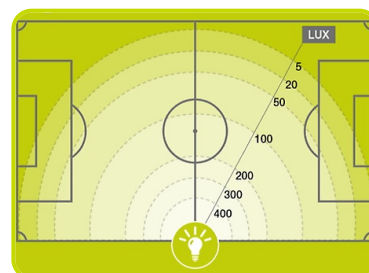


LSW-8Y [MH]



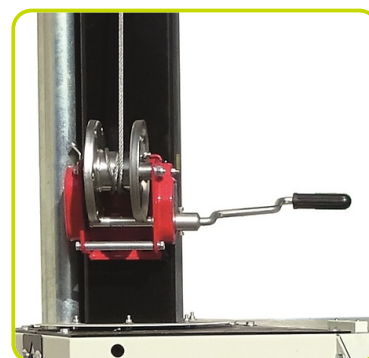
Lighting Features

Lighting Type	Metal Halide	
Frequency	Hz	50
Voltage	V	230
Number of Lamps	nr	4
Nominal Lamps Power (Total)	W	4000
Lighting Capacity	Lumen	360000
Lit up area	m2	4200



Telescopic mast

Material	Galvanized steel	
Maximum height	m	8.0
Lifting System	Manual	
Type of rotation system	Manual	
Anti-rotation system	Mechanical	
Maximum rotation angle	deg	340
Adjustable stabilizers	n°	5
Maximum wind stability	Km/h	110



Engine specifications

Engine Brand	Yanmar	
Model	3TNM72-GPGE	
[50Hz] Exhaust emission level	Unregulated	
Operating Speed-Nominal	rpm	1500
Engine cooling system	Water	
Nr. of cylinder and disposition	3 in line	
Oil capacity	l	2.9
Fuel	Diesel	
Starting system	Electric	



Alternator Specifications

Type	Brushless	
Class	H	
Frequency	Hz	50
Voltage	V	230
Phase (s)	1	
Continuous power 125°/40°	kVA	8

Mobility

Type of Mobility	Site Trailer	
Number of Axles	nr	1
Drawbar Connection	Din eye 45mm	



Dimensional data

Lenght	mm	2650
Width	mm	1300
Height	mm	2460
Length - operating condition	mm	2650
Width - operating condition	mm	2460
Height - operating condition (mast and outriggers extended)	mm	8000
Dry weight	kg	719



Autonomy

Fuel tank capacity	l	75
Running time	h	47



Control Panel

Mounted and integrated in the canopy, for monitoring, control and protection of the Light Tower.

CONTROL SECTION

- Starting key
- Preheater signal lamp
- Emergency stop button (external)
- Hour meter
- Fuel gauge – Monitor fuel level
- Low fuel level signal lamp
- Low oil pressure signal lamp
- Battery charge signal lamp



POWER SECTION

- Automatic earth leakage relay
- Circuit breaker for lamps switch



SOCKET TYPE

2P+T CEE 230V 16A IP44	1
------------------------	---